



Table of Contents

Overview ..... 2

Safety ..... 4

Trim Levels ..... 5

Engines ..... 6

Transmissions..... 6

Common problems / What to look for ..... 6

Recall History ..... 7

Specifications: ..... 8

Notes..... 9

Please note – this is intended as a guide only, specifications change continuously. Please use common-sense and buyer-beware when purchasing any second hand car. If in doubt, seek professional advice.

## Overview



The fourth generation Mondeo (codename: *CD345*) was officially unveiled in 5-door production form in late 2006. Based on the EUCD platform developed with Volvo, the platform is the same used in the new large MPVs Galaxy and S-MAX, but not the North American Ford Fusion or the Mazda Atenza in Japan. It will also possibly be used for several Volvos.

The Mk4 Ford Mondeo was released in May 2007 in the UK where it is currently available in five different trim levels: Edge, Zetec, Ghia, Titanium and Titanium X. In February 2008, Ford announced that in some European markets the Mondeo will be made available with a new Titanium S series trim. This model aims to add an even more 'sporty character' than the current Titanium series. In March 2008, a new 2.2 175 PS (128.7 kW; 172.6 bhp) TDCi common-rail diesel engine was made available providing acceleration to 0-60 mph in 8.4 seconds on the saloon and fuel consumption of returning 45.6 mpg combined. Also available in March 2008 was the Mondeo ECONetic based on the Zetec series. The Mondeo ECONetic is powered with a 2.0 115 PS (84.6 kW; 113.4 bhp) TDCI diesel that returns CO<sub>2</sub> ratings of just 139 g/km on the 5-door. Also just released in Nov 2010 is a new 1.6 Ecoboost engine which boasts 160PS.

Although the fourth production model, after the Mk3 Galaxy, S-MAX and C-MAX, to adopt Ford's current 'kinetic' design language, the Mondeo's design theme was first shown at the 2005 Frankfurt Motor Show, which gave an indication to the look of the Mk4 Mondeo. The new car, in estate bodystyle, was pre-launched in 'concept' form at the Paris Motor Show on 30 September 2006.

The new platform will allow for the use of Volvo's five-cylinder petrol engine, already featured in the Focus ST and S-Max. Also, Ford dropped the two V6 engines for this platform. The petrol engines include a 1.6-litre with three power outputs (110 PS, 125 PS & 160 PS), the 2.0-litre (145 PS), 2.3-litre (161 PS) for automatic models only, and a 2.5-litre five cylinder turbo with 220 PS (162 kW; 217 hp). It was initially believed performance models may have featured engines from Jaguar and Volvo, but following Tata's purchase of Jaguar/Land Rover, performance variants are more likely to feature other 'in-house' Ford engines such as an uprated 2.5l T5 petrol (as found in the Focus RS) or Volvo's D5 diesel.

The new Mondeo uses the new electro-hydraulic steering system, first used on the C-MAX, which sharpens the steering response, and helps to save fuel. Inside, the Mk4 features Ford's Human-Machine Interface (HMI) first seen on the Galaxy and S-Max whilst an enhanced instrument cluster featuring a 5-inch (130 mm) LCD for displaying trip computer and satellite navigation is available as an option on all models. As has historically been the case with new Ford models, equipment levels have been downgraded slightly from the preceding generation - base specification models now have a manual heating/air-conditioning system in place of the climate control which was standard across all versions of the facelift Mk3. Also new on the Mk4 is the option of keyless starting of the engine via a "Ford Power" button on the dashboard.

A product placement promotional initiative made the Mk4 Mondeo James Bond's car for one incidental scene in Casino Royale, introducing the new model to global audiences in November 2006 on the launch day of the movie. Ford Group models have been prominent in the Bond franchise since 2002's Die Another Day, which featured an Aston Martin, a Jaguar convertible, and a Ford Thunderbird.

The Mk4 Mondeo was named one of two cars for the 2007 "Car of the Year" award by Top Gear on 23 December 2007 (the other being the Subaru Legacy Outback).

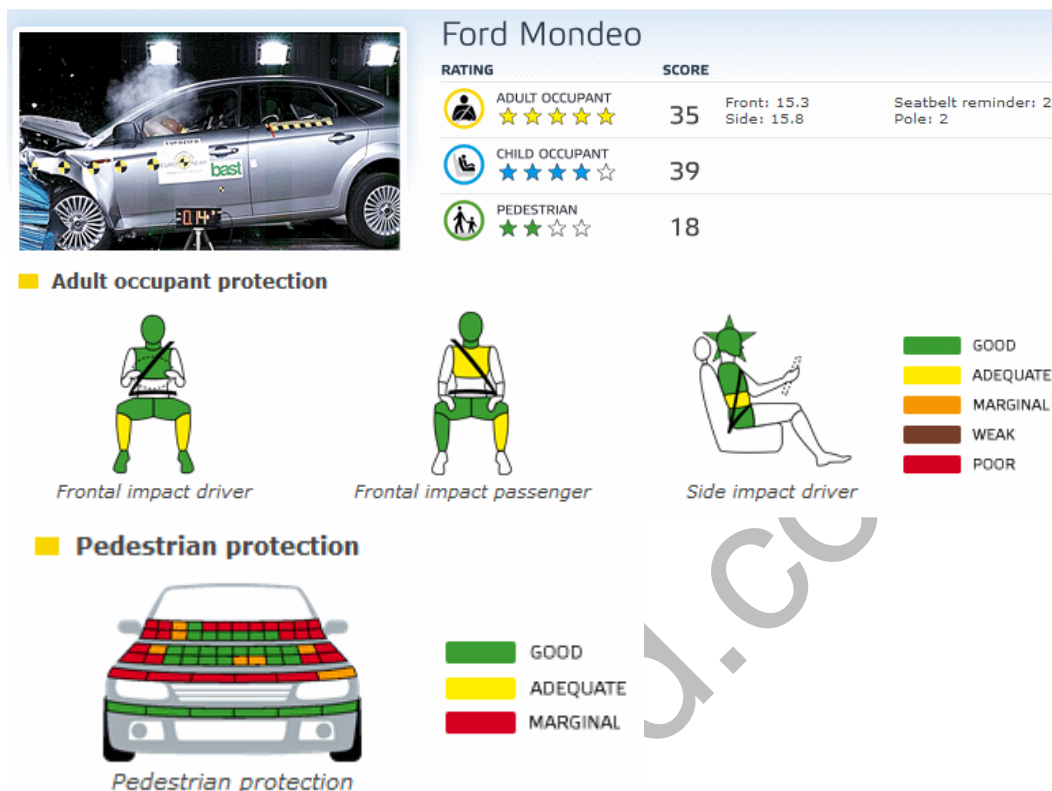
By the end of 2010 a facelifted Mk4 Mondeo was introduced with changes such as the new ecoboost engines and LED daytime running lights. The final changes was shown at the 2010 Moscow

International Motor Show. The front and rear of the car have minor changes, the biggest being the new Kinetic Design. The interior is improved with a better use of materials. The Ghia trim line has been totally removed from UK markets, so the Titanium takes over as the top of the range models. The new ECONetic has higher mpg and further reduced CO<sub>2</sub> emissions thanks to Stop-Start technology. This facelift is prompted by similar revisions to the S-MAX which was launched in summer 2010.

TalkFord.com

## Safety

The Ford Mondeo Mk4 received 5 out of 5 stars for adult occupant safety, 4 out of 5 stars for child occupant safety and 2 out of 4 stars for pedestrian safety in its EuroNCAP tests.



### Comments

#### Front impact

The passenger compartment remained stable during the impact. The Mondeo's steering column moved forward to provide greater space to protect the driver. The driver's knees were protected by an airbag mounted beneath the steering column. The passenger was sufficiently well restrained that his knees did not contact the dashboard.

#### Child occupant

A passenger airbag deactivation switch can be bought as an option from Ford dealers. Euro NCAP has not assessed the switch or the information presented to the driver regarding the status of the passenger airbag. Without the switch, a rearward-facing child restraint should not be used in the front passenger's seat. The label of the warning of doing so was inadequate and was not permanently attached. The presence of ISOFIX anchorages in the second row outboard seats was not prominently marked.

#### Pedestrian

The bumper scored maximum points for the protection offered to pedestrians' legs and the bonnet was rated as predominantly fair for its protection of children's heads. However, most of the front edge of the bonnet was rated as poor as was the bonnet in the area where an adult's head might hit.

**Source:** [EuroNCAP](https://www.euroncap.com)

## Trim Levels

### ECONetic

#### Standard equipment

ABS  
Air conditioning  
Alarm  
Audio remote  
Body coloured bumpers  
CD  
Cloth seat trim  
Cruise control  
Driver's airbag  
Electric driver's seat  
Electric mirrors  
Folding rear seats  
Front electric windows  
Front fog lights  
Heated mirrors  
Isofix child seat anchor points  
Lumbar support  
PAS  
Passenger's airbag  
Remote locking  
Side airbags  
Space saver spare wheel  
Steel wheels  
Telephone  
Traction control

**Edge** - Includes the same equipment as ECONetic, plus Rear electric windows but loses Front fog lights

**Edge+** - Includes the same equipment as Edge, plus Alloy wheels

**Zetec** - Includes the same equipment as Edge +, plus Front fog lights

**Ghia** - Includes the same equipment as Zetec, plus CD Multichanger

**Sport** - Includes the same equipment as Ghia, plus CD, Parking sensors, Sat Nav but loses CD Multichanger

**Titanium** - Includes the same equipment as Sport, plus CD Multichanger, Electric passenger's seat, Sports seats but loses Parking sensors & Sat Nav

**Titanium +** - Includes the same equipment as Titanium, plus Parking sensors

**Titanium X Sport** - Includes the same equipment as Titanium +, plus headlight washers, heated seats, leather seat trim, partial leather seat trim but loses electric passenger's seat

**Titanium X** - Includes the same equipment as Titanium X Sport, plus **cloth** seat trim, **electric** passenger's seat **but** loses **headlight** washers.

## Engines

- 1.8-litre Duratorq TDCi 100PS or 125PS diesel with 5-speed manual transmission. The 125PS version can also be specified with a 6-speed manual transmission.
- 2.0-litre Duratorq TDCi 140PS diesel with 6-speed manual transmission.
- 2.0-litre Duratorq TDCi 130ps diesel with a new Durashift 6-speed automatic transmission.
- 1.6-litre Duratec Ti-VCT 110PS or 125PS petrol engines with 5-speed manual transmission.
- 2.0-litre Duratec HE 145PS petrol engine with Durashift 5-speed manual transmission.
- A new 2.3-litre Duratec HE 161PS 4-cylinder petrol engine with Durashift 6-speed automatic transmission.
- Range-topping, performance-orientated 2.5 litre Volvo sourced 'Duratec' 5-cylinder 220PS petrol engine with Durashift 6-speed manual transmission.

## Transmissions

5-speed manual  
6-speed manual  
6-speed automatic

## Common problems / What to look for

The Mondeo Mk4 is a relatively new design, and as such, any common problems are thin on the ground. So far though, we have identified the following areas:

### Interior:

- Bluetooth voice control option doesn't interact with the Sony radio very well (voice commands not always recognised), and only works if the radio is turned on.

### Exterior:

- Complaints that on 2007 and early 2008 Mondeo's the boot lid pours water into the boot compartment if lifted after/during rain. The fix is a rubber seal going all the way round the boot. All the water that sits at the bottom of the window now floods down the sides of the window and drops a short distance at the top of the boot and flows down the side gutters. This fix was applied from some time in 2008 production.

### Engine:

- Poor economy and sluggish performance from the 1.8TDCI can be cured by an ECU download. There is now a new one. The previous one ended in "LG". There is now a new one ending "LH". That's the one you need.

## Recall History

There have been 23 recalls for the Mondeo in its entire lifespan. (01/1/1992 to 01/12/2010)

#	Launch Date	Recalls Number	Make	Model(s)	Concern	VIN Start	VIN End	Build Start	Build End
1	22/09/1993	R/1993/058	FORD	Mondeo	handbrake operation (continued)	NY, NS, NT, PJ, PU, PM, PP, PB, PR		01/10/1992	11/05/1993
2	22/09/1993	R/1993/058	FORD	All Mondeo estate vehicles	rear suspension bolts and handbrake operation	NY, NS, NT, PJ, PU, PM, PP, PB, PR		01/10/1992	07/05/1993
3	20/09/1994	R/1994/038	FORD	Mondeo	failure of headlamps	1992 - NY NS NT		01/10/1992	14/07/1993
4	31/03/1995	R/1995/011	FORD	Mondeo	possibility of static sparking during refuelling	RP, RB, RR		01/08/1994	28/10/1994
5	24/08/1995	R/1995/081	FORD	Fiesta, Escort and Mondeo with 1.8 diesel	failure of braking system vacuum assistance			19/05/1995	17/08/1995
6	23/01/1996	R/1996/022	FORD	Fiesta, Escort and Mondeo	failure of braking system vacuum assistance			19/05/1995	
7	15/03/1996	R/1996/040	FORD	Mondeo (Except V6 variants)	possible failure of offside front brake caliper	SU		10/10/1995	12/10/1995
8	17/04/1998	R/1998/033	FORD	Mondeo V6 vehicles (fitted with ABS/TCS)	anti lock brake system may cease to function due to electrostatic discharge	WL		01/12/1997	30/01/1998
9	09/06/1998	R/1998/037	FORD	Escort, Mondeo and Scorpio	unexpected deployment of passenger air bag			01/08/1996	28/02/1998
10	23/02/1999	R/1999/005	FORD	Mondeo	possibility of chafing damage to front seat belt webbing	SV, SS, ST, SJ, SU, SM, SP, TB, TR, TA, TG, TC, TK, TD, TE, TL, TY, TS, TT, VJ		05/09/1995	24/09/1997
11	07/10/1999	R/1999/084	FORD	Focus, Mondeo and Cougar	door latch concern			03/09/1998	18/11/1998
12	30/05/2000	R/2000/042	FORD	Mondeo (without ABS)	brake fluid may leak from pressure limiting valve	Various		02/01/1996	07/08/1998
13	20/12/2000	R/2000/154	FORD	Mondeo	possible malfunction of airbag(s)			01/05/2000	27/07/2000
14	21/08/2001	R/2001/117	FORD	Mondeo (CD132)	water ingress into speed control unit	YY, YS, YT, 1J, 1U, 1M, 1P, 1B, 1R, 1A		01/10/2000	31/07/2001
15	08/10/2001	R/2001/113	FORD	Mondeo and Cougar	parking brake ratchet concern	XJ, XT, XJ, XU, XM, XP, YB, YR, YA, YG & YC		01/11/1999	01/05/2000
16	20/04/2002	R/2002/018	FORD	Mondeo	parking brake concern	Various		01/10/2000	05/07/2001
17	10/07/2002	R/2002/088	FORD	MONDEO	battery cable may chafe and short circuit			01/05/2000	31/05/2002
18	03/02/2003	R/2003/007	FORD	MONDEO ST220	power steering pressure hose may chafe on engine inlet manifold			05/03/2002	14/11/2002
19	04/08/2003	R/2003/083	FORD	MONDEO	modification of handbrake lever				
20	30/04/2004	R/2004/065	FORD	Mondeo	there is a possibility of unexpected braking			17/02/2004	11/03/2004
21	02/08/2004	R/2004/132	FORD	MONDEO	possible unexpected braking			22/05/2004	09/07/2004
22	09/04/2009	R/2009/043	FORD	Galaxy and Mondeo	abs may not function correctly				
23	21/05/2009	R/2009/050	FORD	Focus, C-Max, S-Max, Kuga, Galaxy & Mondeo fitted with 2.0L Duratec TDCI Engine	hard brake pedal may occur during engine warm up			01/11/2008	12/03/2009

For a larger, readable version of this image, please visit the [Ford Mondeo Recall History](#) page on [FordWiki.co.uk](#).

## Specifications:

**Wheelbase** 2850mm

### Length

Saloon 4844mm

Hatchback 4778mm

Estate 4830mm

**Width** 1886mm

### Height

Saloon 1500mm

Hatchback 1500mm

Estate 1512mm

**Weight** - 1435–1611 kg

**Warranty** - 3 years / 60000 miles

**Servicing** - 12500 miles

TalkFord.com



**Notes** - This page has been left intentionally blank for you to make notes.

TalkFord.com

Information for this guide has been sourced from [Wikipedia.org](http://Wikipedia.org), [HonestJohn.co.uk](http://HonestJohn.co.uk), [VOSA](http://VOSA), [EuroNCAP](http://EuroNCAP), [FordWiki.co.uk](http://FordWiki.co.uk), and other freely available internet sources. If you believe anything contained within this publication breaches your copyright, please contact [webmaster@talkford.com](mailto:webmaster@talkford.com).

Revision 1. Last Updated Nov 2010. © TalkFord.com