

TALKFORD.com

2007
TO
2011

FORD MONDEO Mk4 BUYERS GUIDE



Produced by TalkFord.com

Table of Contents

Overview	3
Safety	5
Security	5
Trim Levels	6
Engines	8
Transmissions.....	8
Common problems / What to look for	9
Recall History	10
Specifications:	11
Notes.....	12

Please note – this is intended as a guide only, specifications change continuously. Please use common-sense and buyer-beware when purchasing any second hand car. If in doubt, seek

professional advice.

Overview



The fourth generation Mondeo (codename: *CD345*) was officially unveiled in 5-door production form in late 2006. Based on the EUCD platform developed with Volvo, the platform is the same used in the new large MPVs Galaxy and S-MAX, but not the North American Ford Fusion or the Mazda Atenza in Japan. It will also possibly be used for several Volvos.

The Mk4 Ford Mondeo was released in May 2007 in the UK where it is currently available in five different trim levels: Edge, Zetec, Ghia, Titanium and Titanium X. In February 2008, Ford announced that in some European markets the Mondeo will be made available with a new Titanium S series trim. This model aims to add an even more 'sporty character' than the current Titanium series. In March 2008, a new 2.2 175 PS (128.7 kW; 172.6 bhp) TDCi common-rail diesel engine was made available providing acceleration to 0-60 mph in 8.4 seconds on the saloon and fuel consumption of returning 45.6 mpg combined. Also available in March 2008 was the Mondeo ECONetic based on the Zetec series. The Mondeo ECONetic is powered with a 2.0 115 PS (84.6 kW; 113.4 bhp) TDCi diesel that returns CO₂ ratings of just 139 g/km on the 5-door. Also just released in Nov 2010 is a new 1.6 Ecoboost engine which boasts 160PS.

Although the fourth production model, after the Mk3 Galaxy, S-MAX and C-MAX, to adopt Ford's current 'kinetic' design language, the Mondeo's design theme was first shown at the 2005 Frankfurt Motor Show, which gave an indication to the look of the Mk4 Mondeo. The new car, in estate bodystyle, was pre-launched in 'concept' form at the Paris Motor Show on 30 September 2006.

The new platform will allow for the use of Volvo's five-cylinder petrol engine, already featured in the Focus ST and S-Max. Also, Ford dropped the two V6 engines for this platform. The petrol engines include a 1.6-litre with three power outputs (110 PS, 125 PS & 160 PS), the 2.0-litre (145 PS), 2.3-litre (161 PS) for automatic models only, and a 2.5-litre five cylinder turbo with 220 PS (162 kW; 217 hp). It was initially believed performance models may have featured engines from Jaguar and Volvo, but following Tata's purchase of Jaguar/Land Rover, performance variants are more likely to feature other 'in-house' Ford engines such as an uprated 2.5l T5 petrol (as found in the Focus RS) or Volvo's D5 diesel.

The new Mondeo uses the new electro-hydraulic steering system, first used on the C-MAX, which sharpens the steering response, and helps to save fuel. Inside, the Mk4 features Ford's Human-Machine Interface (HMI) first seen on the Galaxy and S-Max whilst an enhanced instrument cluster featuring a 5-inch (130 mm) LCD for displaying trip computer and satellite navigation is available as an option on all models. As has historically been the case with new Ford models, equipment levels have been downgraded slightly from the preceding generation - base specification models now have a manual heating/air-conditioning system in place of the climate control which was standard across all versions of the facelift Mk3. Also new on the Mk4 is the option of keyless starting of the engine via a "Ford Power" button on the dashboard.

A product placement promotional initiative made the Mk4 Mondeo James Bond's car for one incidental scene in Casino Royale, introducing the new model to global audiences in November 2006 on the launch day of the movie. Ford Group models have been prominent in the Bond franchise since 2002's Die Another Day, which featured an Aston Martin, a Jaguar convertible, and a Ford Thunderbird.

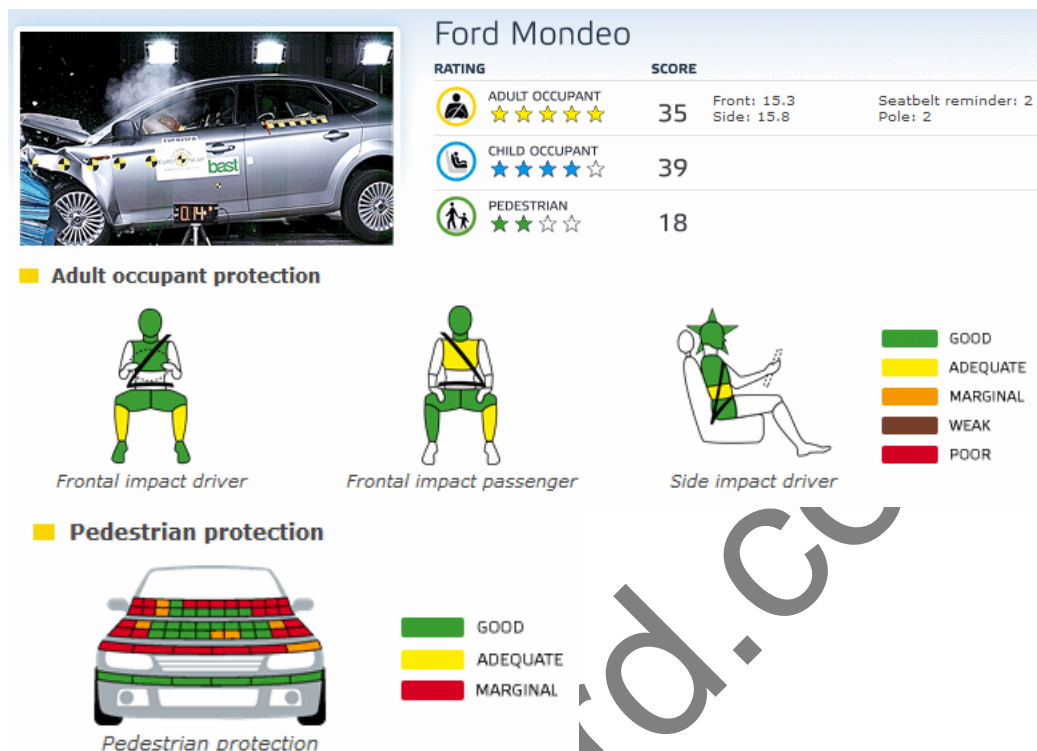
The Mk4 Mondeo was named one of two cars for the 2007 "Car of the Year" award by Top Gear on 23 December 2007 (the other being the Subaru Legacy Outback).

By the end of 2010 a facelifted Mk4 Mondeo was introduced with changes such as the new ecoboost engines and LED daytime running lights. The final changes was shown at the 2010 Moscow International Motor Show. The front and rear of the car have minor changes, the biggest being the new Kinetic Design. The interior is improved with a better use of materials. The Ghia trim line has been totally removed from UK markets, so the Titanium takes over as the top of the range models. The new ECONetic has higher mpg and further reduced CO₂ emissions thanks to Stop-Start technology. This facelift is prompted by similar revisions to the S-MAX which was launched in summer 2010.

TalkFord.com

Safety

The Ford Mondeo Mk4 received 5 out of 5 stars for adult occupant safety, 4 out of 5 stars for child occupant safety and 2 out of 4 stars for pedestrian safety in its EuroNCAP tests.



Comments

Front impact

The passenger compartment remained stable during the impact. The Mondeo's steering column moved forward to provide greater space to protect the driver. The driver's knees were protected by an airbag mounted beneath the steering column. The passenger was sufficiently well restrained that his knees did not contact the dashboard.

Child occupant

A passenger airbag deactivation switch can be bought as an option from Ford dealers. Euro NCAP has not assessed the switch or the information presented to the driver regarding the status of the passenger airbag. Without the switch, a rearward-facing child restraint should not be used in the front passenger's seat. The label of the warning of doing so was inadequate and was not permanently attached. The presence of ISOFIX anchorages in the second row outboard seats was not prominently marked.

Pedestrian

The bumper scored maximum points for the protection offered to pedestrians' legs and the bonnet was rated as predominantly fair for its protection of children's heads. However, most of the front edge of the bonnet was rated as poor as was the bonnet in the area where an adult's head might hit.

Source: [EuroNCAP](http://EuroNCAP.com)

Security

Overall, the Mk4 Mondeo scores well. All the Saloon, Hatchback and Estate models from 2007 to today (Dec 2010) score 5 stars for 'theft of' and four stars for 'theft of'. The ratings are provided by Thatcham.org

Trim Levels









	<p>ECONetic – base model with the following standard equipment:</p> <ul style="list-style-type: none"> ABS Air conditioning Alarm Audio remote Body coloured bumpers CD Cloth seat trim Cruise control Driver's airbag Electric driver's seat Electric mirrors Folding rear seats Front electric windows Front fog lights Heated mirrors Isofix child seat anchor points Lumbar support PAS Passenger's airbag Remote locking Side airbags Space saver spare wheel Steel wheels Telephone Traction control
	<p>Edge - Includes the same equipment as ECONetic, plus rear electric windows but loses front fog lights</p>
	<p>Edge+ - Includes the same equipment as Edge, plus Alloy wheels</p>
	<p>Zetec - Includes the same equipment as Edge +, plus front fog lights</p>
<p>Image Unavailable</p>	<p>Ghia - Includes the same equipment as Zetec, plus CD Multichanger</p>

Image Unavailable	Sport - Includes the same equipment as Ghia, plus CD, parking sensors, Sat Nav but loses CD Multichanger
	Titanium - Includes the same equipment as Sport, plus CD Multichanger, electric passenger's seat, sports seats but loses parking sensors & Sat Nav
	Titanium + - Includes the same equipment as Titanium, plus parking sensors
	Titanium X Sport - Includes the same equipment as Titanium +, plus headlight washers, heated seats, leather seat trim, partial leather seat trim but loses electric passenger's seat
	Titanium X - Includes the same equipment as Titanium X Sport, plus cloth seat trim, electric passenger's seat but loses headlight washers.

Paint Colours

The Mk4 Mondeo was available in the following colours;

- Deep Navy
- Colorado Red
- Frozen White
- Blue Ambition
- Ink Blue
- Kelp
- Machine Silver
- Panther Black
- Sea Grey
- Stardust Silver
- Tango
- Thunder
- Tonic
- White Grape

Mid-life facelift

Ford has introduced a mid-life update for the Mondeo; the outward signs of change are few. The four-door saloon option, which accounted for only a very small proportion of sales, has been dropped in the UK, leaving a range that consists of a five-door hatch and an estate. Front and rear styling has been tweaked, and inside, there is more evidence of a revamp; materials, tolerances and gaps have all been improved.

Buried deep within the car, though are worthwhile drive-train improvements, including extremely impressive new top-of-the range diesel and petrol engines, which deliver performance that would have been unimaginable in mass-market cars a few years ago.

First, the diesel; the new 2.2-litre Duratorq turbodiesel engine turns out 200 horsepower, the sort of output that has previously only been associated with four-cylinder diesels in cars from BMW and Mercedes in cars such as the 123d and E 250 CDI.

The new top petrol engine delivers even stronger performance. The 240 horsepower 2.0-litre turbo carries Ford's EcoBoost branding, which is being applied in both Europe and the USA to a programme of down-sizing petrol engines while improving their performance and economy via technologies such as turbo-charging. In this case, the standard gearbox is Ford's new PowerShift transmission, a self-shifting twin-clutch six-speeder similar in concept to the Volkswagen Group's DSG technology. This, broadly speaking, combines the convenience of an automatic with the economy and responsiveness of a manual.

Top speeds are 153mph (five-door) and 150mph (estate) – not far short of the 155mph to which most serious German performance cars are limited by voluntary agreement. Acceleration from rest to 100km/h (62mph) comes up in 7.5 seconds (five-door) or 7.5 seconds (estate). Combined cycle fuel consumption is 36.6mpg and CO2 emissions are 179g/km.

Engines

- 1.8-litre Duratorq TDCi 100PS or 125PS diesel with 5-speed manual transmission. The 125PS version can also be specified with a 6-speed manual transmission.
- 2.0-litre Duratorq TDCi 140PS diesel with 6-speed manual transmission.
- 2.0-litre Duratorq TDCi 130ps diesel with a new Durashift 6-speed automatic transmission.
- 1.6-litre Duratec Ti-VCT 110PS or 125PS petrol engines with 5-speed manual transmission.
- 2.0-litre Duratec HE 145PS petrol engine with Durashift 5-speed manual transmission.
- A new 2.3-litre Duratec HE 161PS 4-cylinder petrol engine with Durashift 6-speed automatic transmission.
- Range-topping, performance-orientated 2.5 litre Volvo sourced 'Duratec' 5-cylinder 220PS petrol engine with Durashift 6-speed manual transmission.

Transmissions

5-speed manual

6-speed manual

6-speed Durashift automatic – This advanced automatic transmission includes a 'Sportsmode', and also allows you to adjust to your individual driving style by changing to manual mode for more involved driving.

Common problems / What to look for

The Mondeo Mk4 is a relatively new design, and as such, any common problems are thin on the ground. So far though, we have identified the following areas:

Interior:

- Bluetooth voice control option doesn't interact with the Sony radio very well (voice commands not always recognised), and only works if the radio is turned on.

Exterior:

- Complaints that on 2007 and early 2008 Mondeo's the boot lid pours water into the boot compartment if lifted after/during rain. The fix is a rubber seal going all the way round the boot. All the water that sits at the bottom of the window now floods down the sides of the window and drops a short distance at the top of the boot and flows down the side gutters. This fix was applied from some time in 2008 production.

Engine:

- Poor economy and sluggish performance from the 1.8TDCI can be cured by an ECU download. There is now a new one. The previous one ended in "LG". There is now a new one ending "LH". That's the one you need.

Recall History

There have been 23 recalls for the Mondeo in its entire lifespan. (01/1/1992 to 01/12/2010)

For a larger, readable version of this image, please visit the [Ford Mondeo Recall History](http://FordMondeoRecallHistory.com) page on FordWiki.co.uk.

#	Launch Date	Recalls Number	Make	Model(s)	Concern	VIN Start	VIN End	Build Start	Build End
1	22/09/1993	R/1993/006	FORD	Mondeo	handbrake operation (continued)	NY, NS, NT, PJ, PU, PM, PP, PB, PR		01/10/1992	11/06/1993
2	22/09/1993	R/1993/008	FORD	All Mondeo estate vehicles	rear suspension bolts and handbrake operation	NY, NS, NT, PJ, PU, PM, PP, PB, PR		01/10/1992	07/06/1993
3	26/09/1994	R/1994/038	FORD	Mondeo	failure of headlamps	1992 - NY, NS, NT		01/10/1992	14/07/1993
4	31/03/1995	R/1995/011	FORD	Mondeo	possibility of static sparking during refuelling	RP, RB, RR		01/08/1994	28/10/1994
5	24/08/1995	R/1995/081	FORD	Fiesta, Escort and Mondeo with 1.8 diesel	failure of braking system vacuum assistance			19/06/1995	17/08/1995
6	23/01/1996	R/1996/022	FORD	Fiesta, Escort and Mondeo	failure of braking system vacuum assistance			19/06/1995	
7	15/03/1996	R/1996/040	FORD	Mondeo (Except V6 variants)	possible failure of offside front brake caliper	SU		10/10/1995	12/10/1995
8	17/04/1998	R/1998/033	FORD	Mondeo V6 vehicles (fitted with ABS/TCS)	anti lock brake system may cease to function due to electrostatic discharge	WL		01/12/1997	30/01/1998
9	09/06/1998	R/1998/037	FORD	Escort, Mondeo and Scorpio	unexpected deployment of passenger air bag			01/08/1996	28/02/1998
10	23/02/1999	R/1999/005	FORD	Mondeo	possibility of chafing damage to front seat belt webbing	SY, SS, ST, SJ, SU, SM, SP, TB, TR, TA, TG, TC, TK, TD, TE, TL, TY, TS, TT, VJ		05/06/1995	24/09/1997
11	07/10/1999	R/1999/084	FORD	Focus, Mondeo and Cougar	door latch concern			03/09/1998	18/11/1998
12	30/05/2000	R/2000/042	FORD	Mondeo (without ABS)	brake fluid may leak from pressure limiting valve	Various		02/01/1996	07/08/1998
13	20/12/2000	R/2000/154	FORD	Mondeo	possible malfunction of airbag(s)			01/05/2000	27/07/2000
14	21/08/2001	R/2001/117	FORD	Mondeo (CD132)	water ingress into speed control unit	YY, YS, YT, 1J, 1U, 1M, 1P, 1B, 1R, 1A		01/10/2000	31/07/2001
15	08/10/2001	R/2001/113	FORD	Mondeo and Cougar	parking brake ratchet concern	XS, XT, XU, XM, XP, YB, YR, YA, YG & YC		01/11/1999	01/05/2000
16	20/04/2002	R/2002/018	FORD	Mondeo	parking brake concern	Various		01/10/2000	05/07/2001
17	10/07/2002	R/2002/088	FORD	MONDEO	battery cable may chafe and short circuit			01/06/2000	31/05/2002
18	03/02/2003	R/2003/007	FORD	MONDEO ST220	power steering pressure hose may chafe on engine inlet manifold			05/03/2002	14/11/2002
19	04/08/2003	R/2003/083	FORD	MONDEO	modification of handbrake lever				
20	30/04/2004	R/2004/065	FORD	Mondeo	there is a possibility of unexpected braking			17/02/2004	11/03/2004
21	02/08/2004	R/2004/132	FORD	MONDEO	possible unexpected braking			22/09/2004	09/07/2004
22	09/04/2009	R/2009/043	FORD	Galaxy and Mondeo	abs may not function correctly				
23	21/05/2009	R/2009/050	FORD	Focus, C-Max, S-Max, Kuga, Galaxy & Mondeo fitted with 2.0L Duratec TDCI Engine	hard brake pedal may occur during engine warm up			01/11/2008	12/03/2009

TalkFord.com

Specifications:

Wheelbase 2850mm

Length

Saloon 4844mm

Hatchback 4778mm

Estate 4830mm

Width 1886mm

Height

Saloon 1500mm

Hatchback 1500mm

Estate 1512mm

Weight - 1435–1611 kg

Warranty - 3 years / 60000 miles

Servicing - 12500 miles

TalkFord.com

Notes - This page has been left intentionally blank for you to make notes.

TalkFord.com

Information for this guide has been sourced from Wikipedia.org, HonestJohn.co.uk, VOSA, EuroNCAP, FordWiki.co.uk, Thatcham.org and other freely available internet sources. If you believe anything contained within this publication breaches your copyright, please contact webmaster@talkford.com.

Revision 2. Last Updated Dec 2010. © TalkFord.com