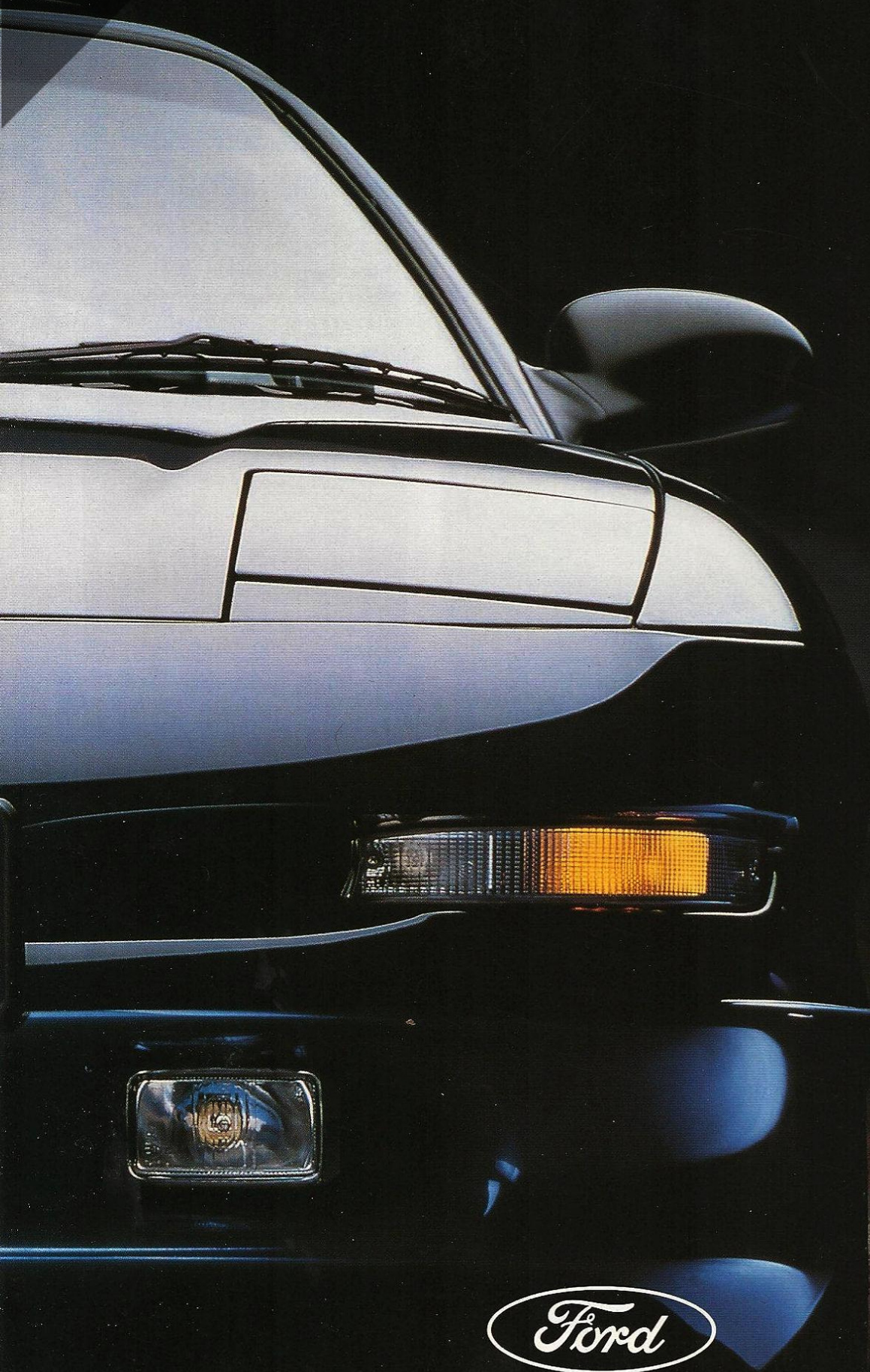


Downloaded from  
TalkFord.com

# Probe





Probe is the sports coupé that not only looks the part but performs to your expectations. Its styling is inspired, creating a visual excitement which is surpassed only by the driving experience. Available as either a 2.5 litre V6 24V for the real enthusiast or as a 2.0 litre, 4 in-line 16V for those who simply love to drive.

The Probe 16V's standard features are exceptional, ranging from exterior styling, like colour-keyed bodyside mouldings and 15" 3-spoke alloy wheels, to the interior panache of body-contoured bucket seats with integral headrests.

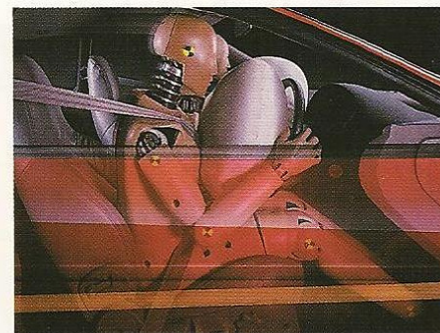
#### Key standard features

- 2.0i DOHC 16V (Catalyst) 4 cylinder engine with 5-speed gearbox.
- Steering wheel and passenger Airbags.
- Ford 951 immobiliser.
- Anti-theft alarm.
- Side impact door beams.
- Headlight levelling (motorised).
- 4-wheel electronic anti-lock brakes.
- Power-assisted steering.
- Electrically-operated and heated mirrors.
- Electrically-operated front windows with driver-controlled 'one shot' lowering.
- 6x15 alloy wheels with locking wheel nuts and 205/55x15 tyres.

- Tailgate wiper with electric wash.
- Central door locking
- Tinted glass.
- Front sport seats.
- Driver's electric lumbar/side bolster adjustment with manual height adjust.
- Electronic Self-Seek AM/FM Stereo Radio/Cassette – Model 2006 RDS, 'Keycode' anti-theft coding and electric aerial.

#### Key options (at extra cost)

- Plus Pack: Electrically-operated sunroof, cruise control, 2007 RDS Radio/Cassette, leather-trimmed steering wheel, leather gearlever knob, map light and illuminated entry light.
- CFC-free air conditioning (only with Plus Pack).





# Probe. Go your own way



Probe 24V sports all the features of its 16V stable-mate, including the 'Plus Pack' as standard, with some powerful additions.

The 2.5 24V DOHC engine provides the greater power and smoother acceleration that you'd expect from a V6 engine.

The exterior is special too – with 16" five-spoke alloy wheels and 225/50x16 radials, lower bodyside cladding, rear wheel guards and twin exhausts.

## Key standard features

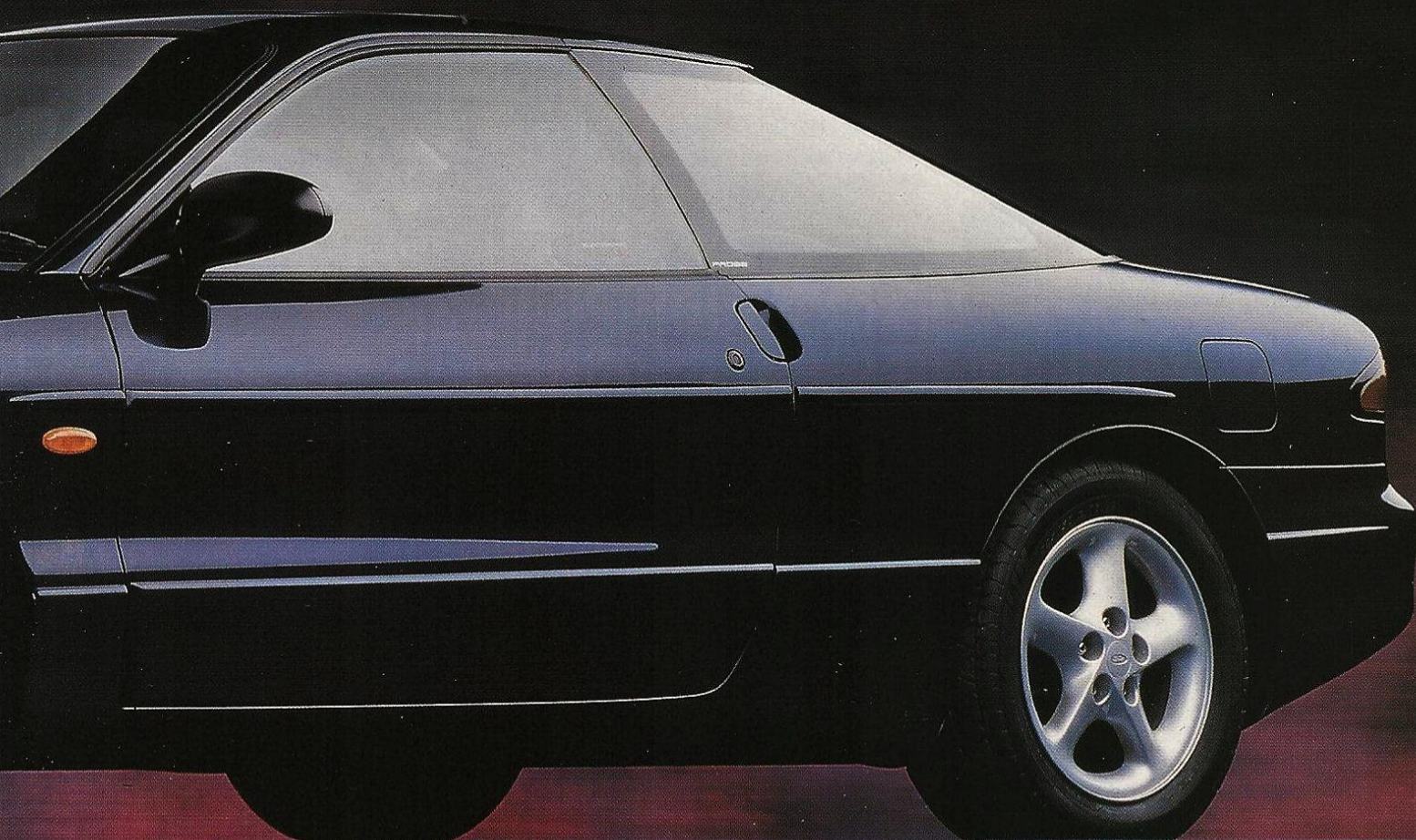
- 2.5i DOHC 24V (Catalyst) 6 cylinder engine with 5-speed gearbox.
- 7x16 five-spoke alloy wheels with locking wheel nuts and 225/50x16 radial tyres.
- Electrically-operated sliding sunroof.
- Cruise control.
- Leather-trimmed, four-spoke steering wheel.
- Leather gearlever knob.
- Map light and illuminated entry light.

- Body colour lower bodyside cladding.
- Twin exhausts.
- Rear wheel guards fitted to wheel arch.
- Electronic Self-Seek AM/FM Stereo Radio/Cassette – Model 2007 RDS, with 'Keycode' anti-theft coding and electric aerial.

## Key options (at extra cost)

- Leather seat trim.
- CFC-free air conditioning





## Colours & Trims

★Clearcoat Metallics are available at extra cost.



**Vibrant White**  
(Solid)



**Electric Blue★**



**Teal Mist★**



**Rio Red**  
(Tinted non-Metallic)



**Electric Currant Red★**



**Opal Grey Cloth**



**Ebony Black**  
(Tinted non-Metallic)



**Light Aspen Silver★**



**Leather**  
(optional, at extra cost, on the 24V model)



# Specifications

## Technical – Mechanical features

### Brakes

Ventilated front discs; solid discs at rear; servo-assisted  
Electronically-controlled anti-lock brakes

### Steering

Power-assisted, speed sensitive rack and pinion

### Suspension

Front: MacPherson struts with triangulated lower track control arms and anti-roll bar

Rear: Quadralink independent with anti-roll bar

## Technical fuel and performance

### 2.0i DOHC 16V (Cat) 5-speed manual

Max power	115PS at 5500rpm
Max torque	170Nm at 4500rpm
Simulated urban driving	29.7 (9.5)
Constant 56 mph (90 kmh)	46.3 (6.1)
Constant 75 mph (120kmh)	35.8 (7.9)
<b>Performance – Ford test figures</b>	
Max speed (mph)	127
0-60 mph (secs)	10.6

### 2.5i DOHC 24V (Cat) 5-speed manual

Max power	165PS at 5500rpm
Max torque	212Nm at 4800rpm
Simulated urban driving	22.6 (12.5)
Constant 56 mph (90 kmh)	36.2 (7.8)
Constant 75 mph (120 kmh)	28.5 (9.9)
<b>Performance – Ford test figures</b>	
Max speed (mph)	137
0-60 mph (secs)	8.5

All figures in mpg (L/100km) are from officially approved tests under the Passenger Car Fuel Consumption Order 1983.

**The Government fuel figures** do not express or imply any guarantee of the fuel consumption of any particular car. The cars themselves have not been tested and there are inevitably differences between individual cars of the same model. In addition, a car may incorporate particular modifications. Furthermore, the driver's style and road and traffic conditions, as well as the extent to which the car has been driven and the standard of maintenance, will affect its fuel consumption.

## Standard safety features

Driver and front passenger Airbags  
Side impact door beams  
Steel safety cage  
Electronically-controlled anti-lock 4-wheel disc brakes  
Inertia switch fuel cut off

## Standard security features

Immobiliser – Ford 951  
Alarm, anti-theft  
Locks: Central door locking  
Locking wheel nuts  
Remote fuel filler flap and tailgate release

## Exterior features

### Exterior Appearance and Styling

Bodyside mouldings: Colour-toned  
Bodyside cladding, body colour (24V only)  
Rear wheel guards fitted to wheel arch (24V only)  
Wheels: 6x15 3-spoke alloy with locking nuts and 205/55x15 tyres (16V only)  
Wheels: 7x16 5-spoke alloy with locking nuts and 225/50x16 tyres (24V only)

### Exterior Functional

Alarm, anti-theft  
Door mirrors: Electrically-operated and heated with black housing  
Heated rear window  
Remote fuel filler flap and tailgate release  
Locks: Central door locking  
Tinted glass  
Immobiliser – Ford 951  
Wipers: Tailgate wiper with electric wash  
**Exterior Lighting**  
Halogen headlights; rear fog light; reversing light  
Headlights: Retractable with motorised, self-levelling  
Long range driving lights  
Engine compartment

## Interior features

### Interior Carpeting and Trim

❖ Leather-covered gearlever knob

### Interior Lighting

Courtesy lights: Front door operated with 'fade off' function

❖ Map reading light and illuminated entry

### In-car Entertainment

Electronic Self-Seek AM/FM Stereo Radio/Cassette – Model 2006 RDS, 'Keycode' anti-theft coding and electric aerial (16V only)

❖ Electronic Self-Seek AM/FM Stereo Radio/Cassette – Model 2007 RDS, 'Keycode' anti-theft coding and electric aerial

### Instruments and Controls

Speedometer and odometer, fuel gauge, water temperature gauge, tachometer  
Oil pressure gauge and voltmeter  
Warning lights for: Low fuel; low washer fluid and tailgate open  
'Lights on' audible warning

❖ Cruise control

Driver and front passenger Airbags  
Steering wheel: Four-spoke soft-feel  
❖ Steering wheel: Leather-trimmed  
Steering column, rake adjustable

### Seats and Seat Belts

Front seats: Sports, fully reclining with head restraints and seat back stowage nets  
Front seats: Forward tilt with return memory on driver's side  
Front seats: Driver's electrically-operated lumbar and side bolster adjust; manual height adjust

### Seats and Seat Belts (continued)

Seat belts: 4 inertia reel, lap and diagonal  
Folding rear seat back with 50:50 split  
Leather-covered seats (Option on 24V only)

### Comfort and Convenience

Air conditioning – CFC-free (optional with 'Plus Pack' on 16V and as a 'stand alone' option on 24V)  
16V Plus Pack option: Electrically-operated sliding sunroof, cruise control, 2007 RDS Radio/Cassette, leather-trimmed steering wheel, leather gearlever knob, map light and illuminated entry light  
❖ Sunroof, electrically-operated sliding  
Vanity mirror with illumination on driver's and passenger's sunvisors  
Windows, electrically-operated front – 'one shot down'  
Centre console and digital clock

### Luggage compartment

Stowage net

❖ Optional 'Plus Pack' contents – available on 16V only. 'Plus Pack' contents are standard on 24V model. All options, including the 'Plus Pack' on 16V, are extra cost.

## Dimensions

Exterior mm	Probe	16V	24V
A Overall length		4585	4585
B Wheelbase		2614	2614
C Overall width with mirrors		1773	1773
D Unladen height		1310	1315

### Interior mm

Front		
Effective headroom	959	959
Max effective leg room	1094	1094
Shoulder room	1320	1320

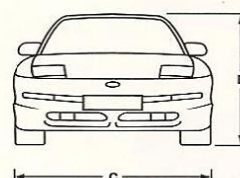
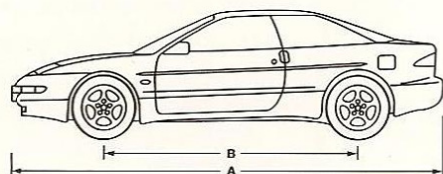
### Interior (continued)

Rear		
Effective headroom	884	884
Min effective leg room	725	725
Shoulder room	1368	1368

### Stowable luggage cubic metres†

4-seat mode	0.396	0.396
2-seat mode (laden to roof)	1.00	1.00

† Measured using the VDA Method. Dimensions may vary dependent on the model and equipment fitted.



The Leather Trim Seat option consists of Leather facings on front seats and "leather effect" vinyl on rear seats



R. C. EDMONDSON (SPALDING) LTD  
ST. JOHN'S ROAD  
SPALDING  
LINCS  
PE11 1JA  
(0775) 767651

Downloaded from  
TalkFord.com

## Ford Cares — All the service you expect

### Ford Aftercare Services

**From the moment your new car leaves the showroom, Ford aftercare services can provide total protection throughout its life. Scheduled Ford servicing is available to you through a nationwide network of over 1000 Dealers; each offering a range of Ford aftercare packages. No one is more committed to customer service and complete motoring confidence than Ford.**

### 12 Month Unlimited Mileage New Car Warranty

Every new Ford car is covered by a 12 month, unlimited mileage Warranty. The Ford Customer Warranty states that if any part of your vehicle becomes defective due to faulty manufacture or materials in the first 12 months from the date you took delivery, the part will be repaired or replaced free of charge without any fuss.

### Extra Cover — The Ford Optional Extended Warranty Plan

Whichever Extra Cover Plan you choose, you have the benefit of RAC Membership for the duration of the plan. Extra Cover will also protect you against unexpected repair bills for a further one or two years after your first year Warranty expires. Simply choose the plan that suits your kind of motoring:

- 2 years from the commencement of the new vehicle Warranty for 18,000 miles, 24,000 miles or unlimited mileage.
- 3 years from the commencement of the new vehicle Warranty for 24,000 miles, 36,000 miles or 60,000 miles.

### 6 Year Perforation Warranty

The bodywork of all Ford cars is covered against corrosion for 12 months, and, in addition, against perforation from 'inside out' caused by faulty manufacture or materials for six years from the day you took delivery. That is defined as originating from the inside section of bodywork, welded or joined sections, sealed edges or seams. For full details and conditions, please ask a Ford Dealer.

### Customer Order Price Protection Plan

As part of its continuing commitment to customer satisfaction, Ford has a Price Protection Plan. This Price Protection Plan means that the price you pay is the same as the price on your order, as long as you are prepared to accept delivery within 3 months, and in any event, as soon as your car is available. Your Dealer has full details of the Plan.

### Ford Parts and Accessories

Ford parts and accessories are available from your local Ford Dealer and hundreds of Ford Dealerships nationwide who have the support and back-up of a highly sophisticated parts distribution system.

### Ford Credit Europe plc

Ford Credit finances every third new Ford car sold in Britain. From first time buyers to fleet operators, Ford Credit provides finance plans to a wide range of motorists and remains committed to the very highest levels of customer service. When it comes to financing a new Ford vehicle, Ford Credit has the key. Ford Credit Europe plc, Jubilee House, The Drive, Brentwood, Essex CM13 3AR.

### Options

Options is an innovative way for customers to drive a new Ford more often, for less than you thought possible. With this and a full range of other finance plans you can be assured of the same quality and level of service from Ford Credit as you get from your Ford vehicle. Ford Credit Europe plc, Jubilee House, The Drive, Brentwood, Essex CM13 3AR.

Finance is provided subject to status to over 18s only. Written quotations are available on request. Guarantees and indemnities may be required. Certain categories of business users do not qualify for the Options plan.

### Ford Contract Motoring

Ford Contract Motoring combines the benefits of contract hire with a national service network that is second to none. It can be structured to allow your business to concentrate on success whilst our Dealers look after your vehicles. Ford Contract Motoring — Servicing Your Success.

### Tax Free Sales

Most cars in the Ford range are available for Tax Free Personal Export. Details are available from your local Ford Dealer or Ford Motor Company Limited, Tax Free Sales, Wintersells Road, Byfleet, Surrey, KT14 7LF. Tel: 0932 335113.

### Ford MotorQuote

Ford has established a national car insurance service called MotorQuote. Working in association with RAC Insurance Services, MotorQuote offers Ford customers a guaranteed quotation at an affordable price. Details of the Ford MotorQuote insurance service are available from your nearest Ford Dealer or telephone direct on 0325 282897 — UK Mainland (0232 314884 — Northern Ireland).

### The Ford Commitment

The Ford commitment provides you with a level of customer confidence and assurance that no other motor manufacturer can equal. We value your custom and have structured our three point 'Commitment' to reflect this.

#### Ford Commitment ① — 30 Day Exchange.

#### Ford Commitment ② — 24 Hour Roadside Assistance.

#### Ford Commitment ③ — Replacement or Refund within 12 Months for persistent unresolvable defects.

Ask your Dealer for details or leaflet SP 0111A is available for more information.

### Ford Barclaycard

Ford and Barclaycard have teamed up to offer what we believe to be the best credit card package for today's motorist. The card provides holders with the opportunity to accumulate rebates of up to £600 per year, over a period of three years, to the maximum rebate value of £1800 off any new Ford vehicle. For further details about this exciting new credit card scheme please ask your local Dealer for a leaflet, or call 0800 111 222.

Finance is provided subject to status to over 18s only, by Barclays Bank PLC. Written quotations are available on request; telephone number 0800 111 222. Not available to businesses.

### Illustrations, descriptions and specifications

Ford policy is one of continuous product development. The right is reserved to change specifications, colours and prices of the models and items illustrated and described in this publication at any time. For the latest details always consult your Ford Dealer.



***Everything we do is driven by you.***

Designed and produced electronically by Allan Burrows Limited, Ingatestone, Essex.  
Printed in England by Jarrolds Printing, Norwich.  
Published by Merchandising Programmes,  
Ford Motor Company Limited, Brentwood, Essex, England.  
FA1168  
March 1994.  
© Ford Motor Company Limited.